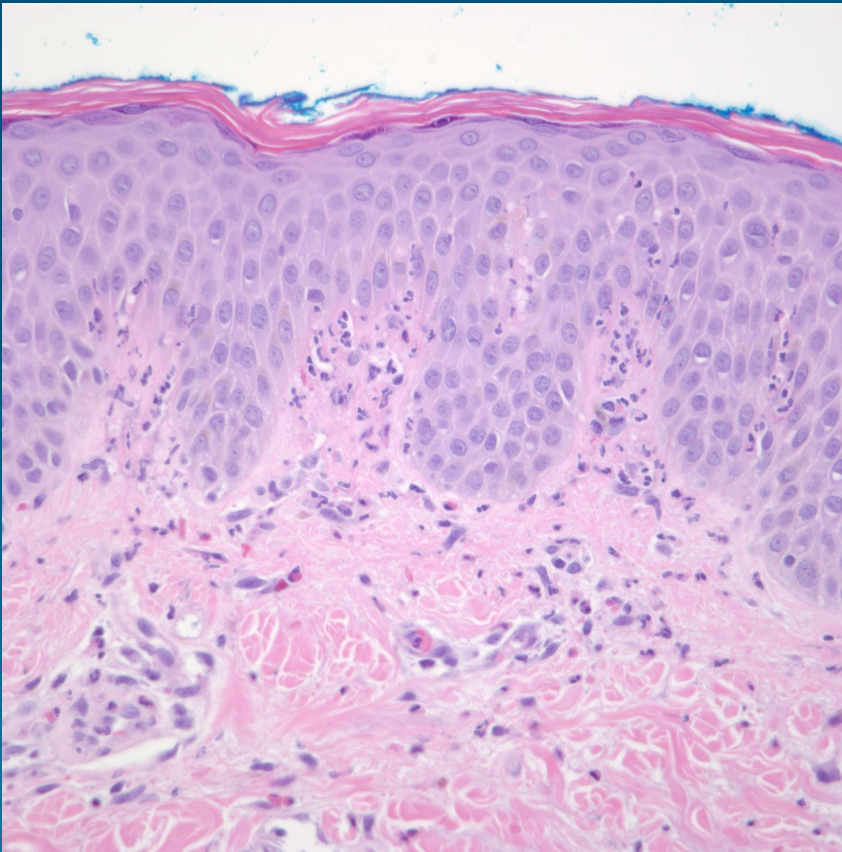


What is the best diagnosis?

- A. Incontinentia pigmenti
- B. Sweet's syndrome
- C. Dermatitis herpetiformis
- D. Bullous pemphigoid
- E. Erythema chronicum migrans

Dermatitis herpetiformis

Pearls



- Papillary dermal microabscesses with neutrophils coalescing to form vesiculo-bullous changes
- No vasculitis, interface dermatitis, or acantholysis
- Variable eosinophils
- DIF to confirm and differentiate from histologically identical Linear IgA disease